



Policy Maps

2012–2030







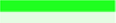
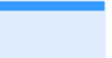


An integral part of the Brixham Peninsula Neighbourhood Plan

Contents

1. Policy Map of the Brixham Peninsula Neighbourhood Plan area which shows site allocations and identifications with enlarged maps for:
 1. Berry Head
 2. Brixham Town Centre
 3. St Marys
 4. Sharkham
 5. Churston – The Grove
 6. Churston Cross
 7. Higher Brixham
 8. Lupton Park
 9. Clennon & Goodrington
 10. Galmpton – Broadsands
 11. Galmpton – Brokenbury
 12. White Rock

2. For information purposes, a repeat of the Policy Map which shows rejected housing sites.

Key to Maps

Neighbourhood Plan Area		Policy BH5: Town / Village Area	
Policy E2: Settlement Boundary		Policy J1: Identified Jobs ^{1,2}	
Policy E3: Settlement Gap ³		Policy BH3: Committed Housing ¹	
Policy E4: Local Green Space		Policy BH3: Allocated Housing ¹	
Policy E5: Public Open Space		For info: Rejected Housing	

Notes:

General – The text on allocated and identified sites (e.g., E4–4) cross refers to the Policy Document. The first part of the text is the policy number (e.g., E4–Local Green Space) and the second part of the text is the policy clause (e.g., 4–Berry Head), with the exception of housing sites labelled 'H' rather than 'BH3'.

1. *For definitions see footnotes in Policy Document, Policy J1, Table 1 and Policy Document, Policy BH3, Table 2.*
2. *Also includes Policy J5: Sustaining a vibrant harbour-side economy.*
3. *Arrows show principle viewpoints as per photographs in Policy Document, Appendix 3.*

Brixham Town Council

Brixham Town Hall, New Road, Brixham, Devon, TQ5 8TA
Tel: 01803 859678 Email: brixhamparish@torbay.gov.uk

Policy Maps

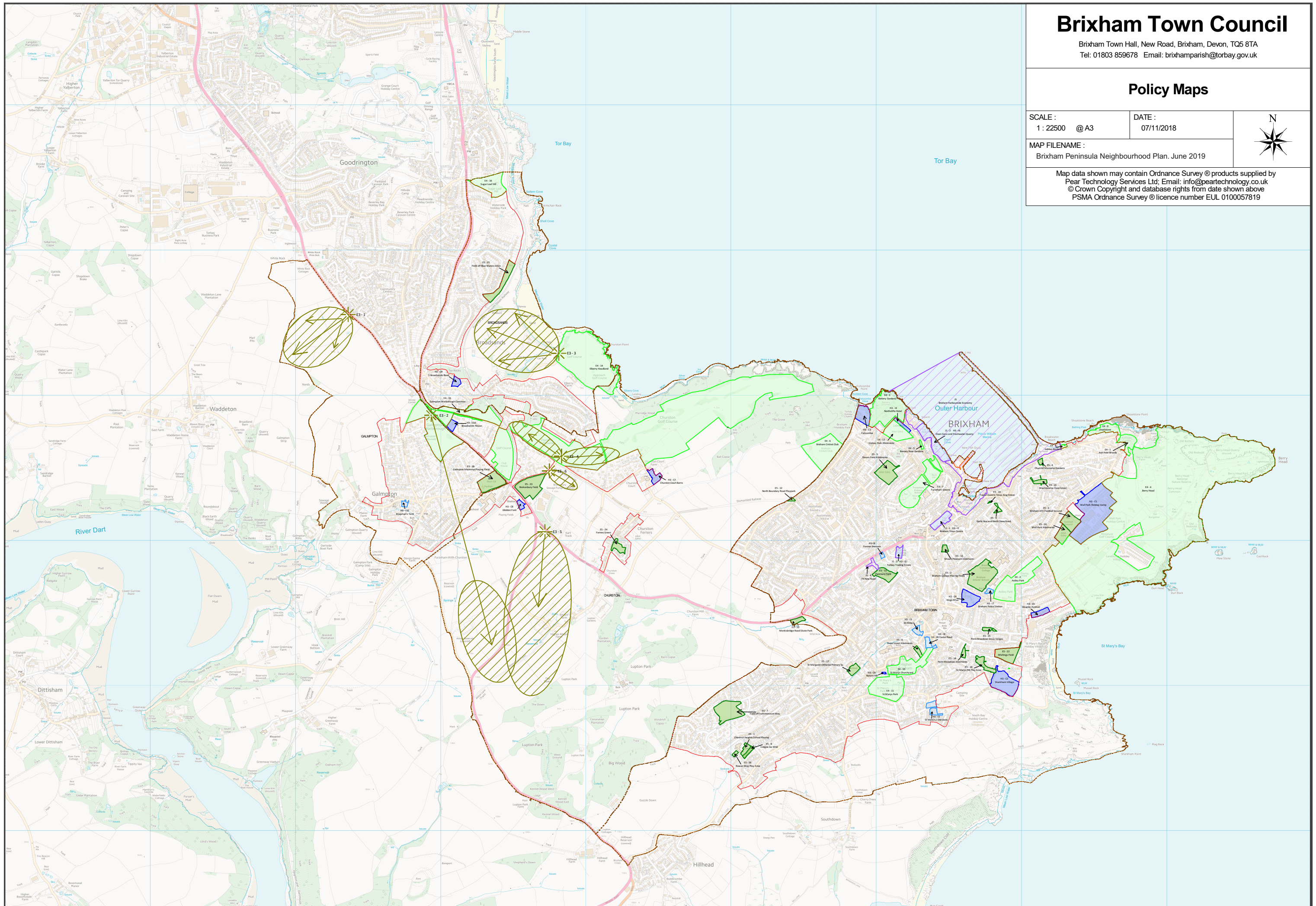
SCALE :
1 : 22500 @A3

DATE :
07/11/2018



MAP FILENAME :
Brixham Peninsula Neighbourhood Plan. June 2019

Map data shown may contain Ordnance Survey © products supplied by
Pear Technology Services Ltd. Email: info@peartechology.co.uk
© Crown Copyright and database rights from date shown above
PSMA Ordnance Survey © licence number EUL 0100057819



Brixham Town Council

Brixham Town Hall, New Road, Brixham, Devon, TQ5 8TA
Tel: 01803 859678 Email: brixhamparish@torbay.gov.uk

Policy Maps Summary

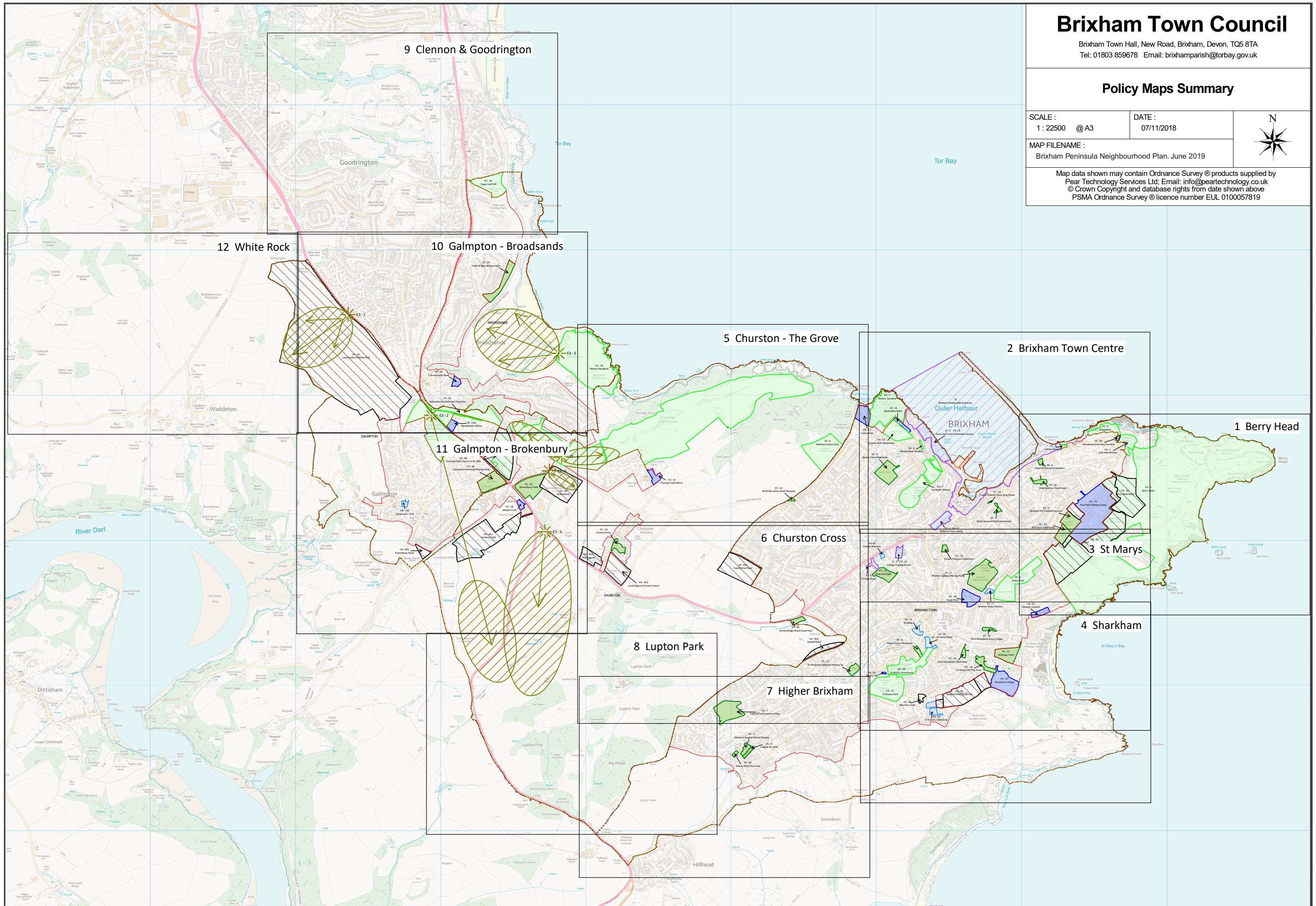
SCALE :
1 : 22500 @ A3

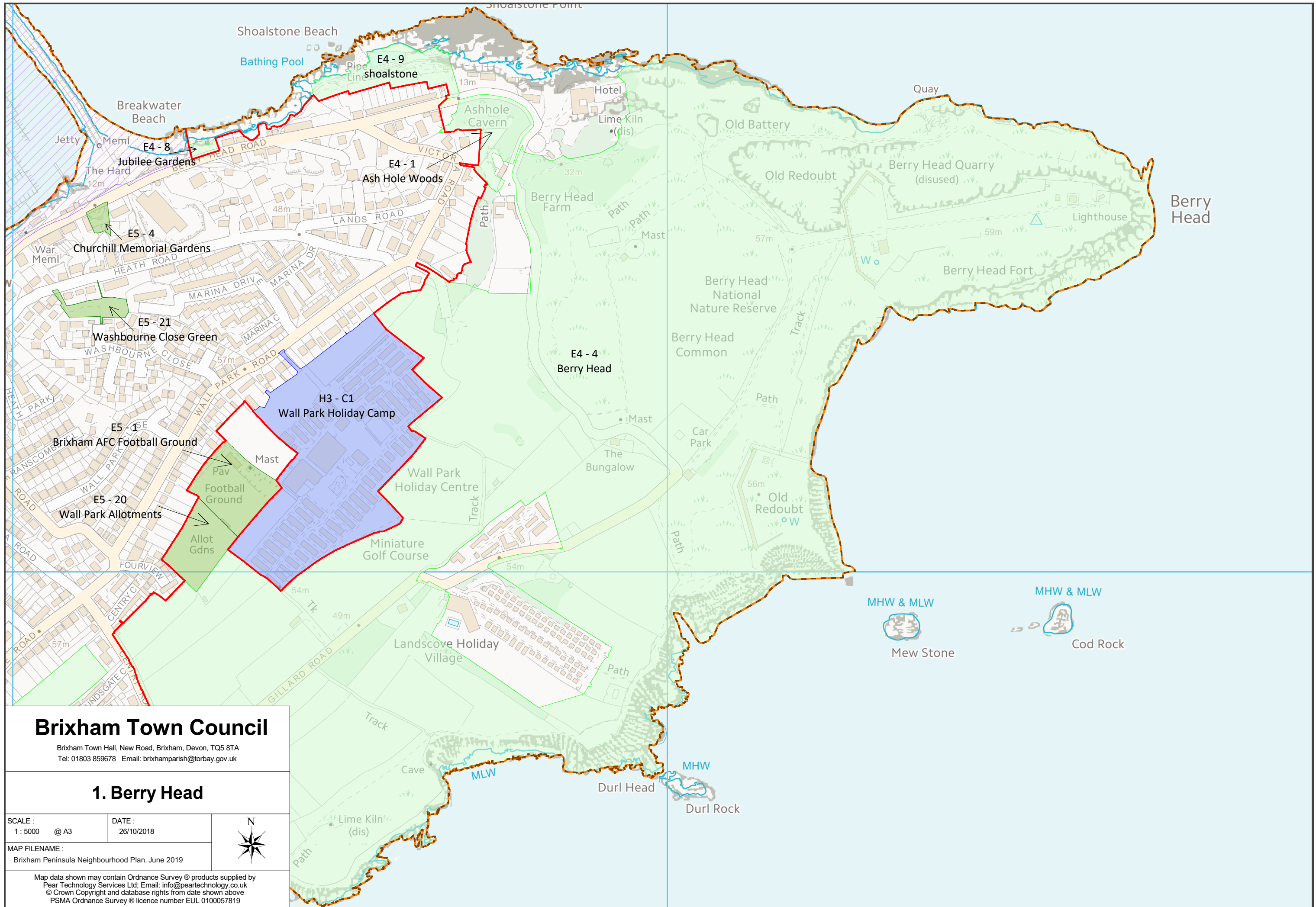
DATE :
07/11/2018



MAP FILENAME :
Brixham Peninsula Neighbourhood Plan, June 2019

Map data shown may contain Ordnance Survey © products supplied by
Pear Technology Services Ltd. Email: info@peartechology.co.uk
© Crown Copyright and database rights from date shown above
PSMA Ordnance Survey © licence number EUL 0100057819





Brixham Town Council

Brixham Town Hall, New Road, Brixham, Devon, TQ5 8TA
 Tel: 01803 859678 Email: brixhamparish@torbay.gov.uk

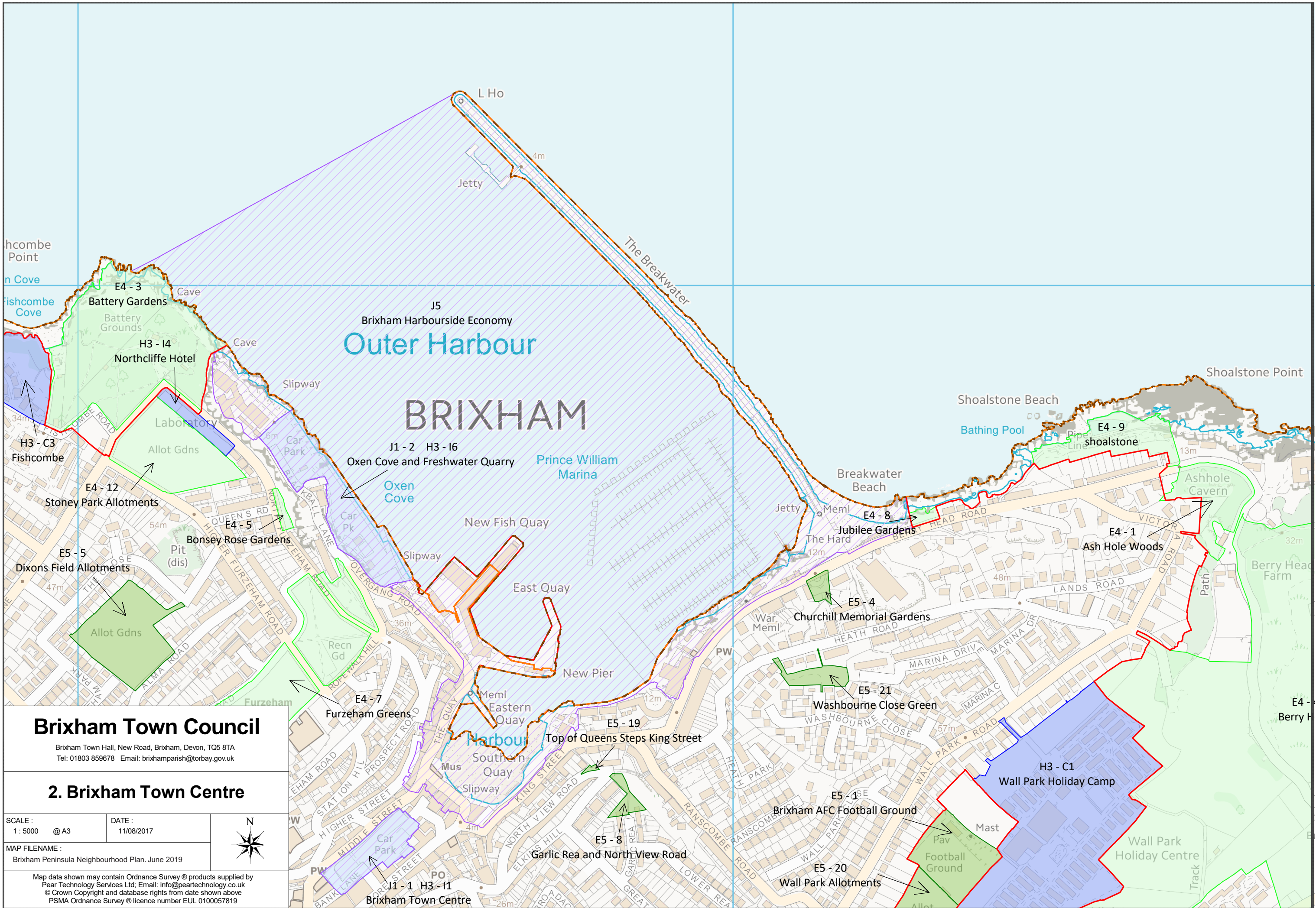
1. Berry Head

SCALE : 1 : 5000 @ A3
 DATE : 26/10/2018



MAP FILENAME : Brixham Peninsula Neighbourhood Plan. June 2019

Map data shown may contain Ordnance Survey® products supplied by
 Pear Technology Services Ltd; Email: info@peartechtechnology.co.uk
 © Crown Copyright and database rights from date shown above
 PSMA Ordnance Survey® licence number EUL 0100057819



Brixham Town Council

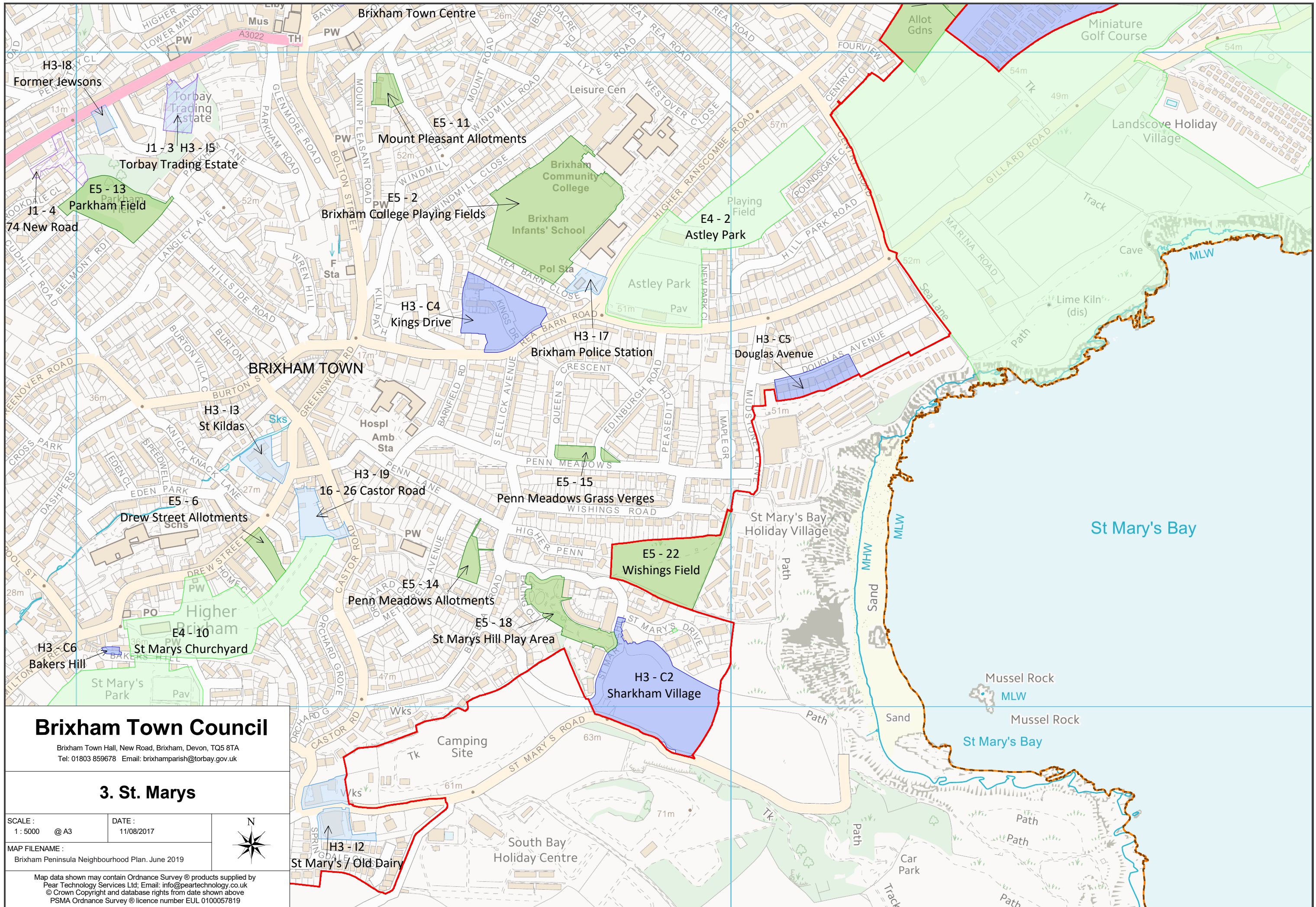
Brixham Town Hall, New Road, Brixham, Devon, TQ5 8TA
 Tel: 01803 859678 Email: brixhamparish@torbay.gov.uk

2. Brixham Town Centre

SCALE : 1 : 5000 @ A3	DATE : 11/08/2017
MAP FILENAME : Brixham Peninsula Neighbourhood Plan. June 2019	



Map data shown may contain Ordnance Survey © products supplied by
 Pear Technology Services Ltd; Email: info@peartechology.co.uk
 © Crown Copyright and database rights from date shown above
 PSMA Ordnance Survey © licence number EUL 0100057819



Brixham Town Council

Brixham Town Hall, New Road, Brixham, Devon, TQ5 8TA
 Tel: 01803 859678 Email: brixhamparish@torbay.gov.uk

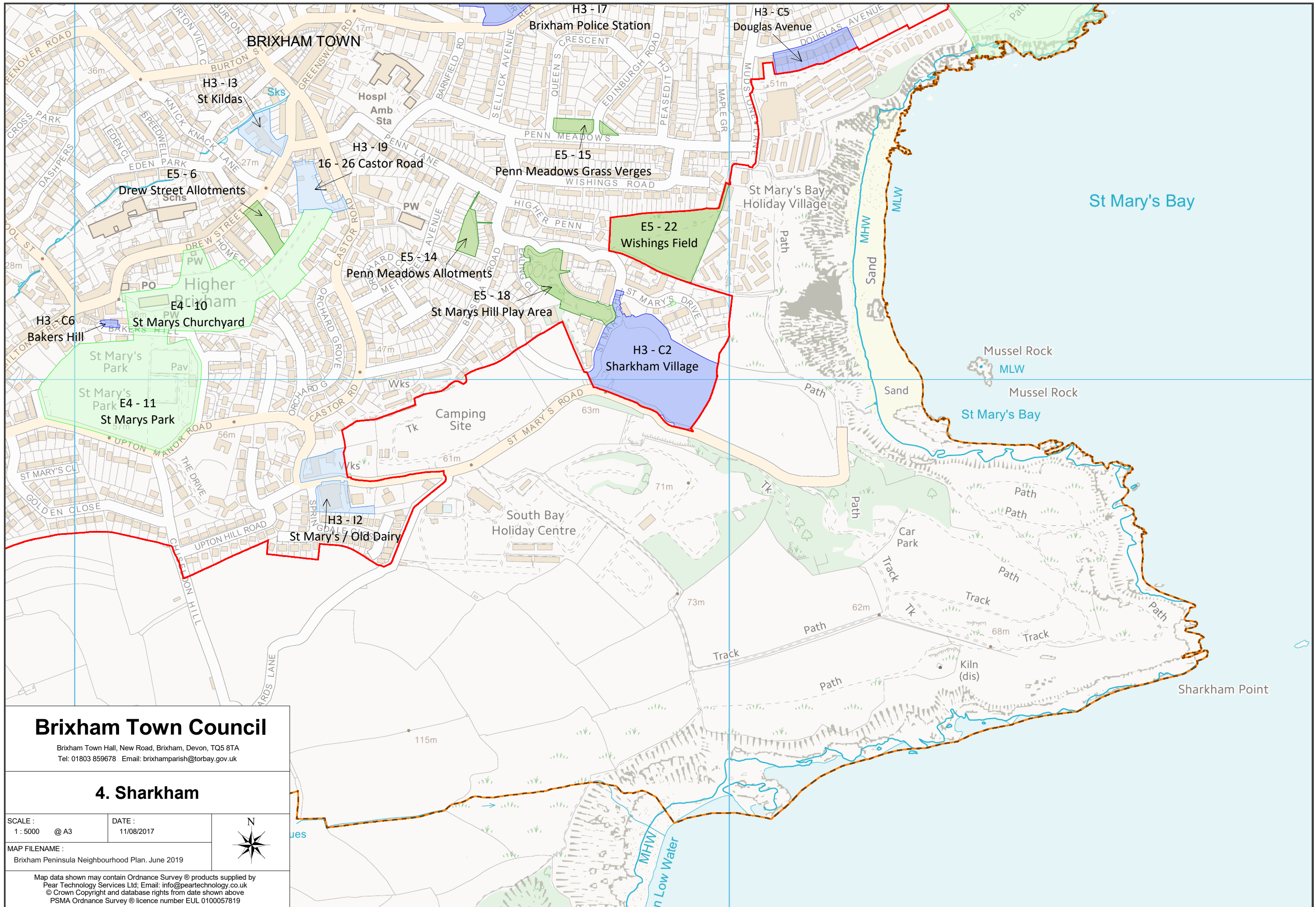
3. St. Marys

SCALE : 1 : 5000 @ A3
 DATE : 11/08/2017



MAP FILENAME : Brixham Peninsula Neighbourhood Plan, June 2019

Map data shown may contain Ordnance Survey © products supplied by
 Pear Technology Services Ltd; Email: info@peartechology.co.uk
 © Crown Copyright and database rights from date shown above
 PSMA Ordnance Survey © licence number EUL 0100057819



Brixham Town Council

Brixham Town Hall, New Road, Brixham, Devon, TQ5 8TA
 Tel: 01803 859678 Email: brixhamparish@torbay.gov.uk

4. Sharkham

SCALE : 1 : 5000 @ A3
 DATE : 11/08/2017



MAP FILENAME : Brixham Peninsula Neighbourhood Plan. June 2019

Map data shown may contain Ordnance Survey® products supplied by
 Pear Technology Services Ltd; Email: info@peartechology.co.uk
 © Crown Copyright and database rights from date shown above
 PSMA Ordnance Survey® licence number EUL 0100057819



Brixham Town Council

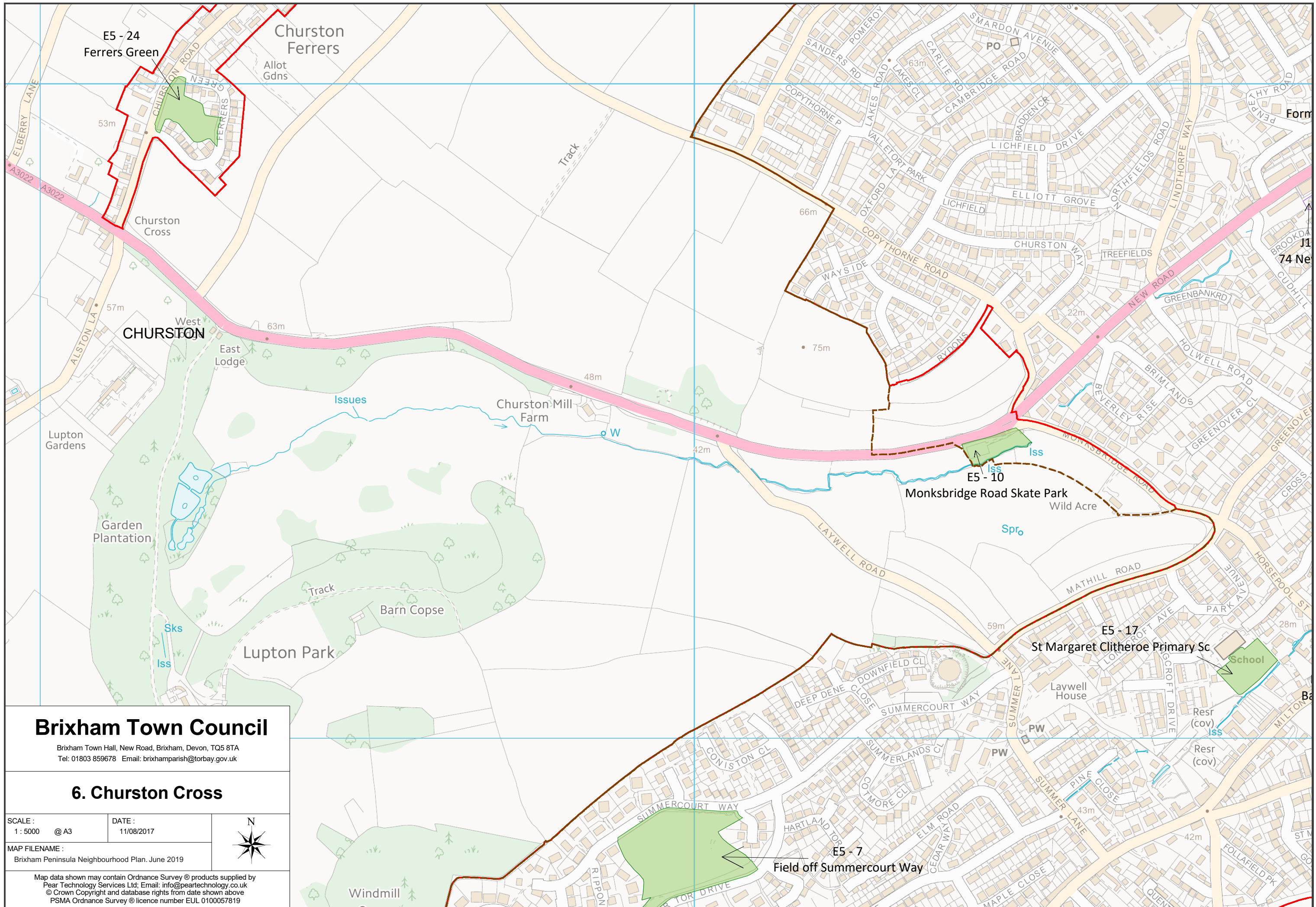
Brixham Town Hall, New Road, Brixham, Devon, TQ5 8TA
 Tel: 01803 859678 Email: brixhamparish@torbay.gov.uk

5. Churston - The Grove

SCALE : 1 : 5000 @ A3 DATE : 11/08/2017
 MAP FILENAME : Brixham Peninsula Neighbourhood Plan, June 2019



Map data shown may contain Ordnance Survey © products supplied by
 Pear Technology Services Ltd; Email: info@peartechology.co.uk
 © Crown Copyright and database rights from date shown above
 PSMA Ordnance Survey © licence number EUL 0100057819



Brixham Town Council

Brixham Town Hall, New Road, Brixham, Devon, TQ5 8TA
 Tel: 01803 859678 Email: brixhamparish@torbay.gov.uk

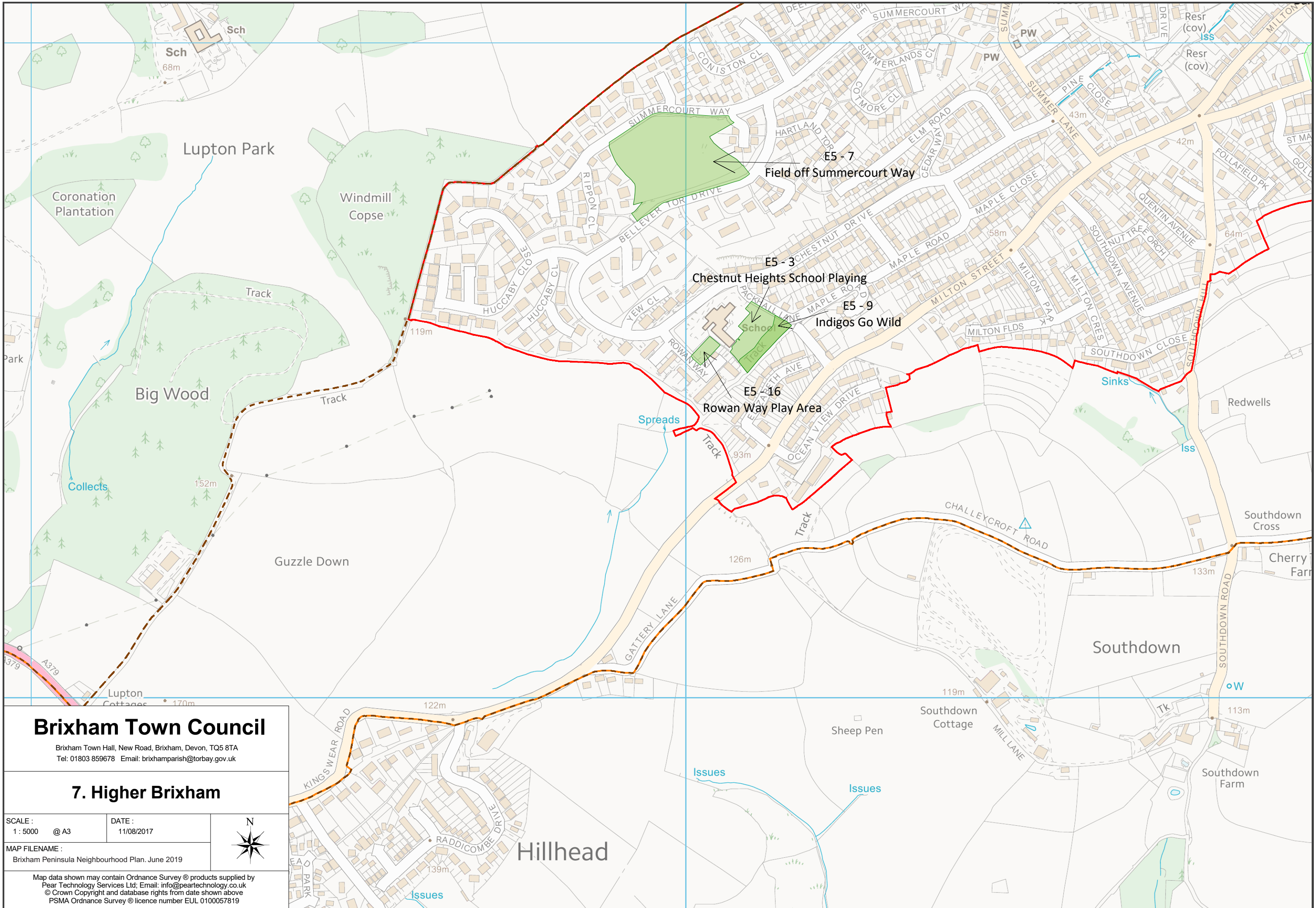
6. Churston Cross

SCALE : 1 : 5000 @ A3
 DATE : 11/08/2017



MAP FILENAME :
 Brixham Peninsula Neighbourhood Plan, June 2019

Map data shown may contain Ordnance Survey® products supplied by
 Pear Technology Services Ltd; Email: info@peartechology.co.uk
 © Crown Copyright and database rights from date shown above
 PSMA Ordnance Survey® licence number EUL 0100057819



Lupton Park

E5 - 7
Field off Summercourt Way

E5 - 3
Chestnut Heights School Playing

E5 - 9
Indigos Go Wild

E5 - 16
Rowan Way Play Area

Big Wood

Guzzle Down

Southdown

Hillhead



Spreads

Sinks

Issues

Issues

Issues

Sch
68m

Resr (cov)
ISS

Resr (cov)

Coronation
Plantation

Windmill
Copse

Track

Track

Track

Track

Track

Track

Track

CHALLEYCROFT ROAD

MILL LANE

GATTERY LANE

BELLEVER TOR DRIVE

SUMMERCOURT WAY

COVISTON CL

DEE

RIPPON CL

YEW CL

ROWAN WAY

ROWAN WAY

ROWAN WAY

GATTERY LANE

GATTERY LANE

GATTERY LANE

GATTERY LANE

GATTERY LANE

HARTLAND TOP

CHESTNUT DRIVE

PICKHALL LANE

EMMATH AVE

OCEAN VIEW DRIVE

OCEAN VIEW DRIVE

OCEAN VIEW DRIVE

OCEAN VIEW DRIVE

OCEAN VIEW DRIVE

OCEAN VIEW DRIVE

ELM ROAD

MAPLE ROAD

MAPLE ROAD

MAPLE ROAD

MAPLE ROAD

MAPLE ROAD

MAPLE ROAD

MAPLE ROAD

MAPLE ROAD

MAPLE ROAD

MAPLE CLOSE

MAPLE CLOSE

MAPLE CLOSE

MAPLE CLOSE

MAPLE CLOSE

MAPLE CLOSE

MAPLE CLOSE

MAPLE CLOSE

MAPLE CLOSE

MAPLE CLOSE

MAPLE CLOSE

MAPLE CLOSE

MAPLE CLOSE

MAPLE CLOSE

MAPLE CLOSE

MAPLE CLOSE

MAPLE CLOSE

MAPLE CLOSE

MAPLE CLOSE

MAPLE CLOSE

MAPLE CLOSE

MAPLE CLOSE

MAPLE CLOSE

MAPLE CLOSE

MAPLE CLOSE

MAPLE CLOSE

MAPLE CLOSE

MAPLE CLOSE

MAPLE CLOSE

MAPLE CLOSE

MAPLE CLOSE

MAPLE CLOSE

MAPLE CLOSE

MAPLE CLOSE

MAPLE CLOSE

MAPLE CLOSE

MAPLE CLOSE

MAPLE CLOSE

MAPLE CLOSE

MAPLE CLOSE

MAPLE CLOSE

MAPLE CLOSE

MAPLE CLOSE

MAPLE CLOSE

MAPLE CLOSE

MAPLE CLOSE

MAPLE CLOSE

MAPLE CLOSE

MAPLE CLOSE

MAPLE CLOSE

MAPLE CLOSE

MAPLE CLOSE

MAPLE CLOSE

MAPLE CLOSE

MAPLE CLOSE

MAPLE CLOSE

MAPLE CLOSE

MAPLE CLOSE

MAPLE CLOSE

MAPLE CLOSE

MAPLE CLOSE

MAPLE CLOSE

MAPLE CLOSE

MAPLE CLOSE

MAPLE CLOSE

MAPLE CLOSE

MAPLE CLOSE

MAPLE CLOSE

MAPLE CLOSE

MAPLE CLOSE

MAPLE CLOSE

MAPLE CLOSE

MAPLE CLOSE

MAPLE CLOSE

MAPLE CLOSE

MAPLE CLOSE

MAPLE CLOSE

MAPLE CLOSE

MAPLE CLOSE

MAPLE CLOSE

MAPLE CLOSE

MAPLE CLOSE

MAPLE CLOSE

MAPLE CLOSE

MAPLE CLOSE

MAPLE CLOSE

MAPLE CLOSE

MAPLE CLOSE

MAPLE CLOSE

MAPLE CLOSE

MAPLE CLOSE

MAPLE CLOSE

MAPLE CLOSE

MAPLE CLOSE

MAPLE CLOSE

MAPLE CLOSE

MAPLE CLOSE

MAPLE CLOSE

MAPLE CLOSE

MAPLE CLOSE

MAPLE CLOSE

MAPLE CLOSE

MAPLE CLOSE

MAPLE CLOSE

MAPLE CLOSE

MAPLE CLOSE

MAPLE CLOSE

MAPLE CLOSE

MAPLE CLOSE

MAPLE CLOSE

MAPLE CLOSE

MAPLE CLOSE

MAPLE CLOSE

MAPLE CLOSE

MAPLE CLOSE

MAPLE CLOSE

MAPLE CLOSE

MAPLE CLOSE

MAPLE CLOSE

MAPLE CLOSE

MAPLE CLOSE

MAPLE CLOSE

MAPLE CLOSE

MAPLE CLOSE

MAPLE CLOSE

MAPLE CLOSE

MAPLE CLOSE

MAPLE CLOSE

MAPLE CLOSE

MAPLE CLOSE

MAPLE CLOSE

MAPLE CLOSE

MAPLE CLOSE

MAPLE CLOSE

MAPLE CLOSE

MAPLE CLOSE

MAPLE CLOSE

MAPLE CLOSE

MAPLE CLOSE

MAPLE CLOSE

MAPLE CLOSE

MAPLE CLOSE

MAPLE CLOSE

MAPLE CLOSE

MAPLE CLOSE

MAPLE CLOSE

MAPLE CLOSE

MAPLE CLOSE

MAPLE CLOSE

MAPLE CLOSE

MAPLE CLOSE

MAPLE CLOSE

MAPLE CLOSE

MAPLE CLOSE

MAPLE CLOSE

MAPLE CLOSE

MAPLE CLOSE

MAPLE CLOSE

MAPLE CLOSE

MAPLE CLOSE

MAPLE CLOSE

MAPLE CLOSE

MAPLE CLOSE

MAPLE CLOSE

MAPLE CLOSE

MAPLE CLOSE

MAPLE CLOSE

MAPLE CLOSE

MAPLE CLOSE

MAPLE CLOSE

MAPLE CLOSE

MAPLE CLOSE

MAPLE CLOSE

MAPLE CLOSE

MAPLE CLOSE

MAPLE CLOSE

MAPLE CLOSE

MAPLE CLOSE

MAPLE CLOSE

MAPLE CLOSE

MAPLE CLOSE

MAPLE CLOSE

MAPLE CLOSE

MAPLE CLOSE

MAPLE CLOSE

MAPLE CLOSE

MAPLE CLOSE

MAPLE CLOSE

MAPLE CLOSE

MAPLE CLOSE

MAPLE CLOSE

MAPLE CLOSE

MAPLE CLOSE

MAPLE CLOSE

MAPLE CLOSE

MAPLE CLOSE

MAPLE CLOSE

MAPLE CLOSE

MAPLE CLOSE

MAPLE CLOSE

MAPLE CLOSE

MAPLE CLOSE

MAPLE CLOSE

MAPLE CLOSE

MAPLE CLOSE

MAPLE CLOSE

MAPLE CLOSE

MAPLE CLOSE

MAPLE CLOSE

MAPLE CLOSE

MAPLE CLOSE

MAPLE CLOSE

MAPLE CLOSE

MAPLE CLOSE

MAPLE CLOSE

MAPLE CLOSE

MAPLE CLOSE

MAPLE CLOSE

MAPLE CLOSE

MAPLE CLOSE

MAPLE CLOSE

MAPLE CLOSE

MAPLE CLOSE

MAPLE CLOSE

MAPLE CLOSE

MAPLE CLOSE

MAPLE CLOSE

MAPLE CLOSE

MAPLE CLOSE

MAPLE CLOSE

MAPLE CLOSE

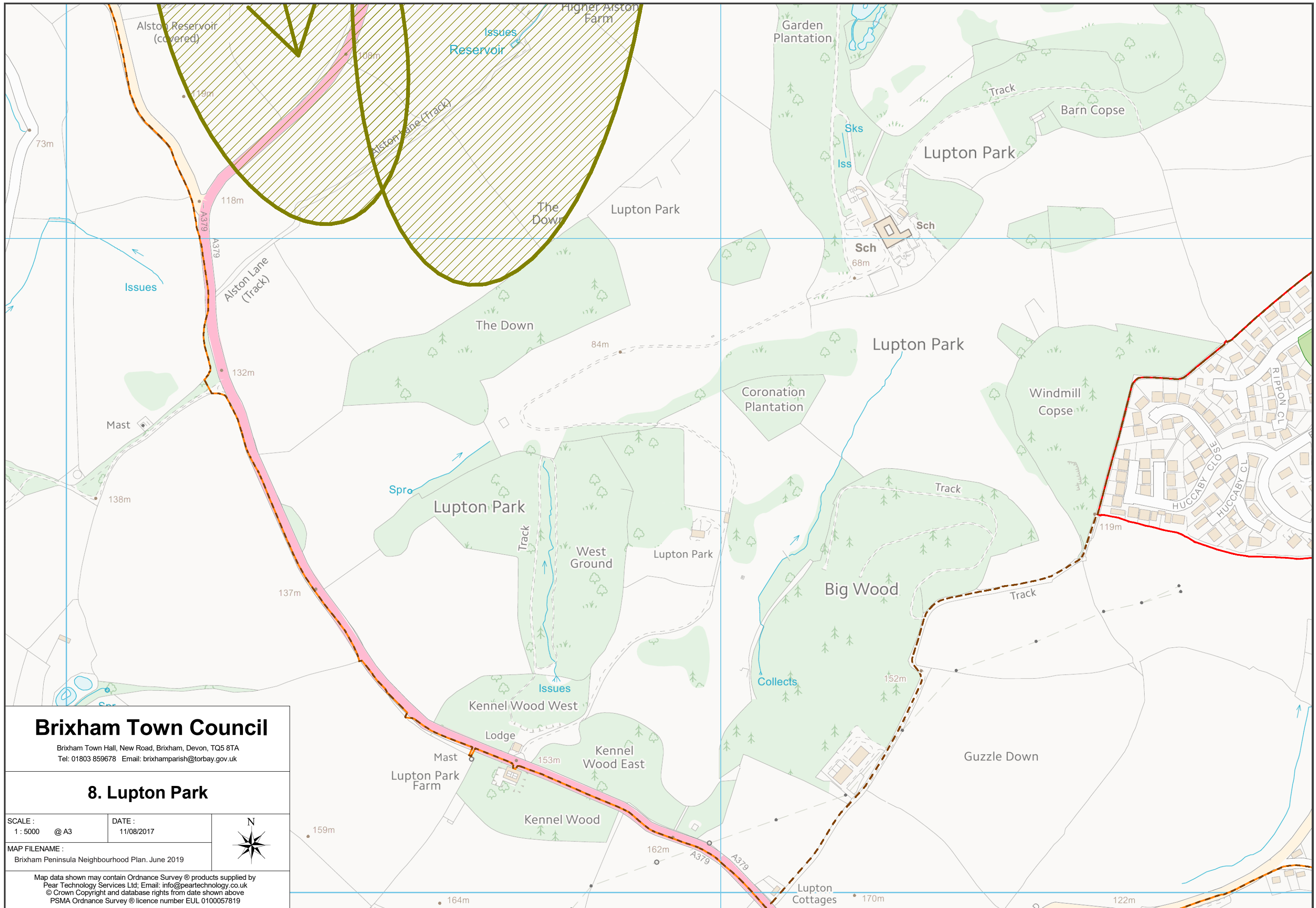
MAPLE CLOSE

MAPLE CLOSE

MAPLE CLOSE

MAPLE CLOSE

MAPLE CLOSE



Brixham Town Council

Brixham Town Hall, New Road, Brixham, Devon, TQ5 8TA
 Tel: 01803 859678 Email: brixhamparish@torbay.gov.uk

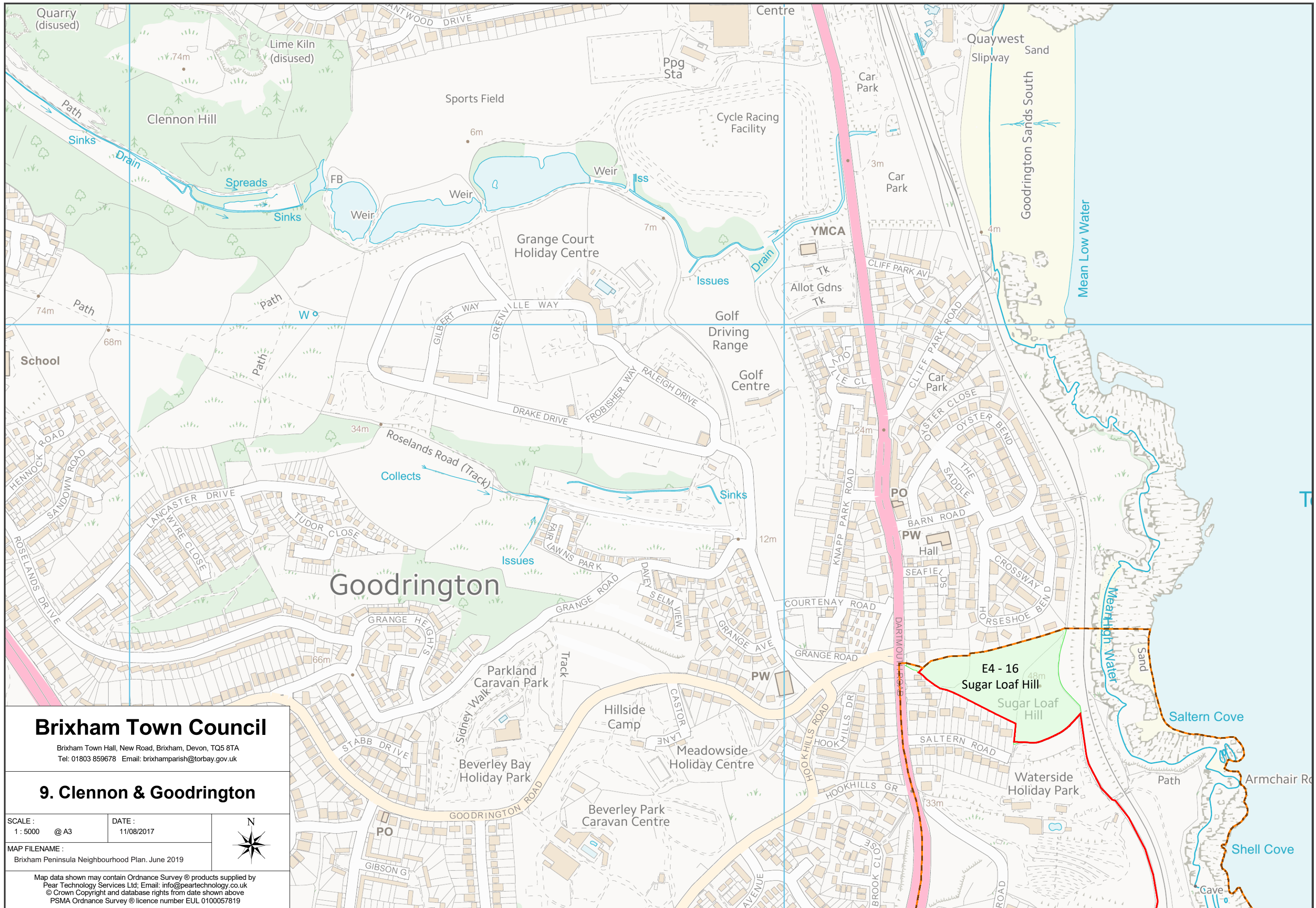
8. Lupton Park

SCALE : 1 : 5000 @ A3
 DATE : 11/08/2017



MAP FILENAME : Brixham Peninsula Neighbourhood Plan, June 2019

Map data shown may contain Ordnance Survey® products supplied by
 Pear Technology Services Ltd; Email: info@peartechology.co.uk
 © Crown Copyright and database rights from date shown above
 PSMA Ordnance Survey® licence number EUL 0100057819



Brixham Town Council

Brixham Town Hall, New Road, Brixham, Devon, TQ5 8TA
 Tel: 01803 859678 Email: brixhamparish@torbay.gov.uk

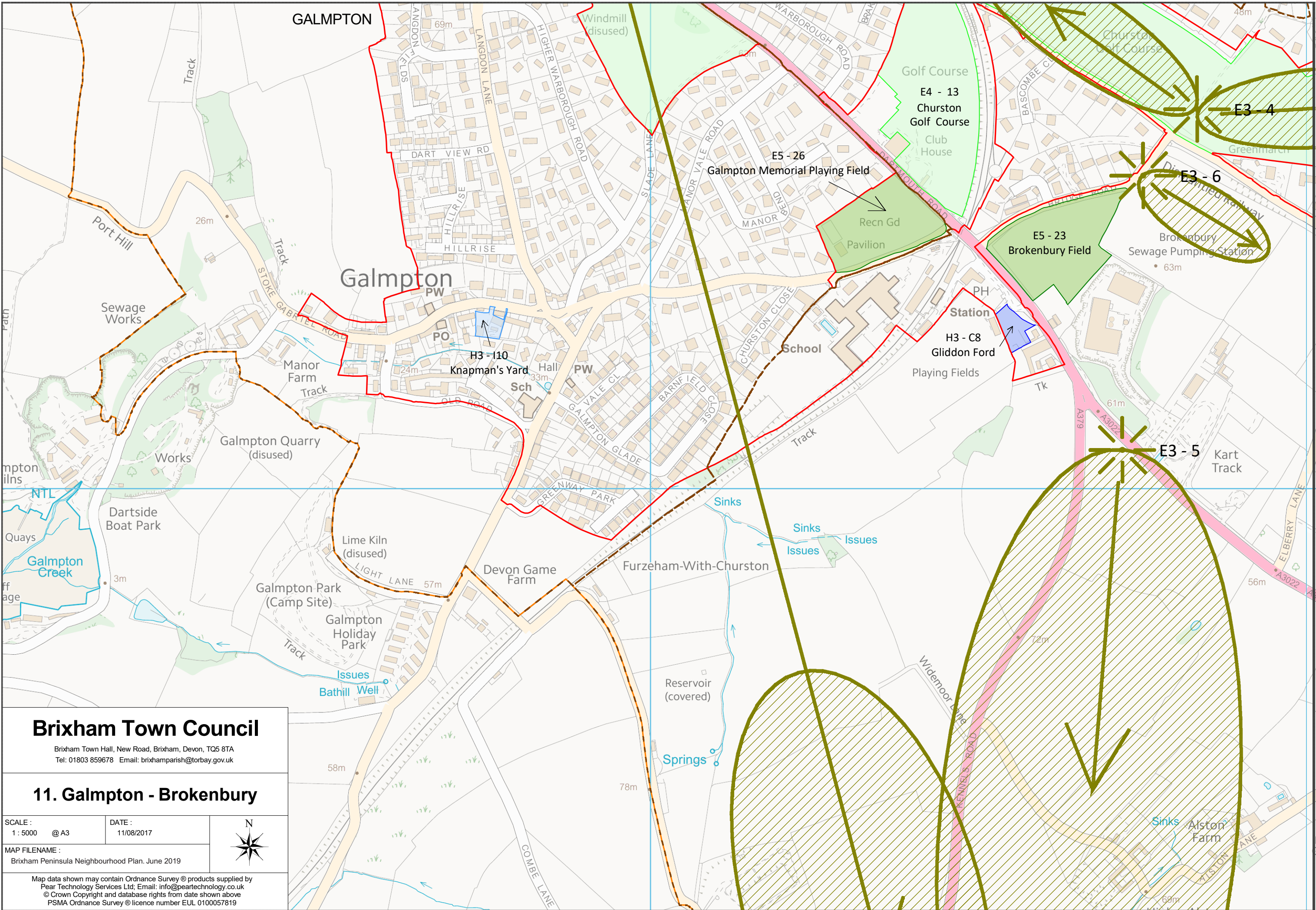
9. Clennon & Goodrington

SCALE : 1 : 5000 @ A3 DATE : 11/08/2017



MAP FILENAME : Brixham Peninsula Neighbourhood Plan. June 2019

Map data shown may contain Ordnance Survey® products supplied by
 Pear Technology Services Ltd; Email: info@peartechology.co.uk
 © Crown Copyright and database rights from date shown above
 PSMA Ordnance Survey® licence number EUL 0100057819



Brixham Town Council

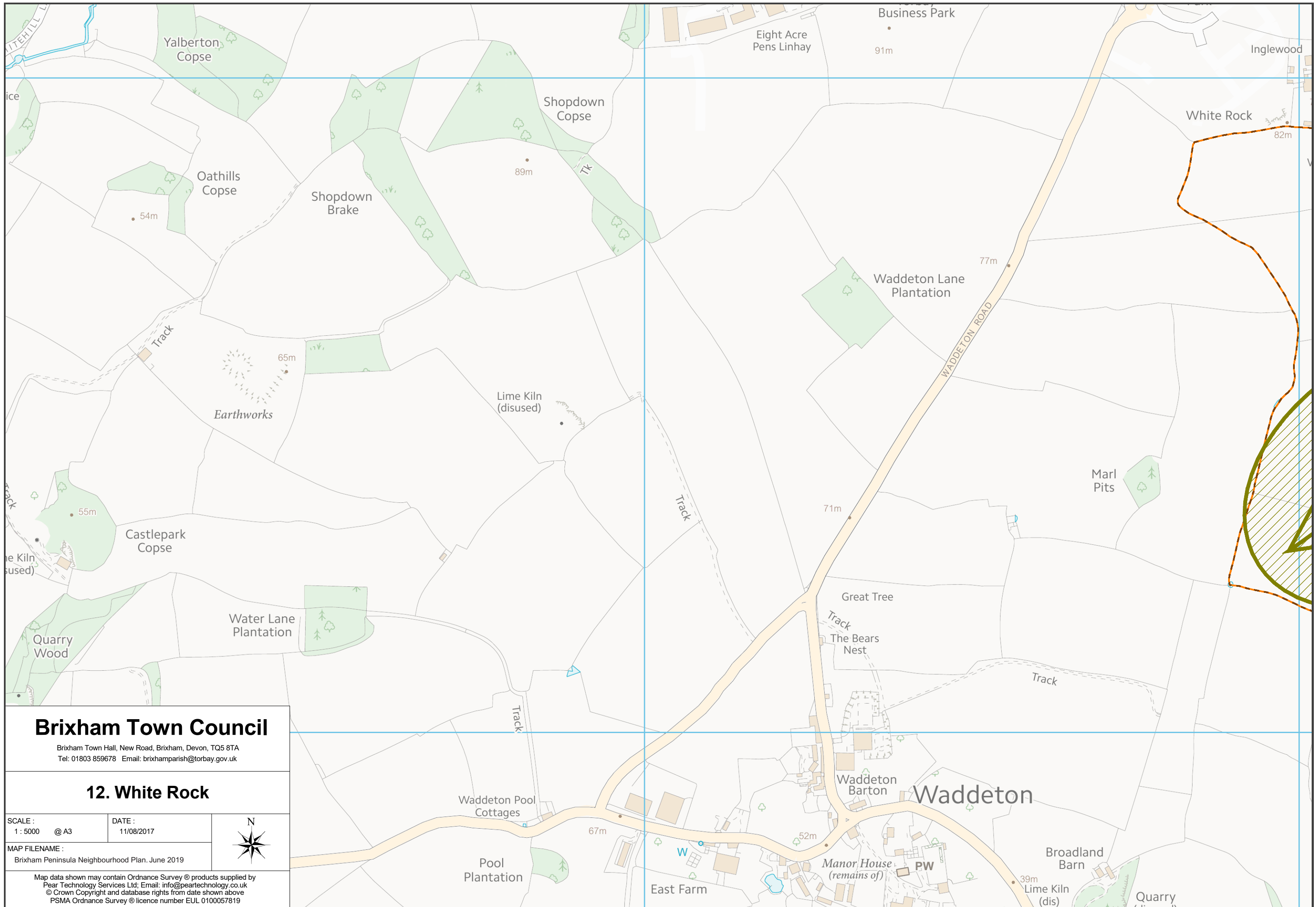
Brixham Town Hall, New Road, Brixham, Devon, TQ5 8TA
 Tel: 01803 859678 Email: brixhamparish@torbay.gov.uk

11. Galmpton - Brokenbury

SCALE : 1 : 5000 @ A3	DATE : 11/08/2017
MAP FILENAME : Brixham Peninsula Neighbourhood Plan. June 2019	



Map data shown may contain Ordnance Survey © products supplied by
 Pear Technology Services Ltd; Email: info@peartechology.co.uk
 © Crown Copyright and database rights from date shown above
 PSMA Ordnance Survey © licence number EUL 0100057819



Brixham Town Council

Brixham Town Hall, New Road, Brixham, Devon, TQ5 8TA
 Tel: 01803 859678 Email: brixhamparish@torbay.gov.uk

12. White Rock

SCALE : 1 : 5000 @ A3 DATE : 11/08/2017



MAP FILENAME : Brixham Peninsula Neighbourhood Plan, June 2019

Map data shown may contain Ordnance Survey® products supplied by
 Pear Technology Services Ltd; Email: info@peartechology.co.uk
 © Crown Copyright and database rights from date shown above
 PSMA Ordnance Survey® licence number EUL 0100057819

Brixham Town Council

Brixham Town Hall, New Road, Brixham, Devon, TQ5 8TA
Tel: 01803 859678 Email: brixhamparish@torbay.gov.uk

Maps of the Neighbourhood Plan Area

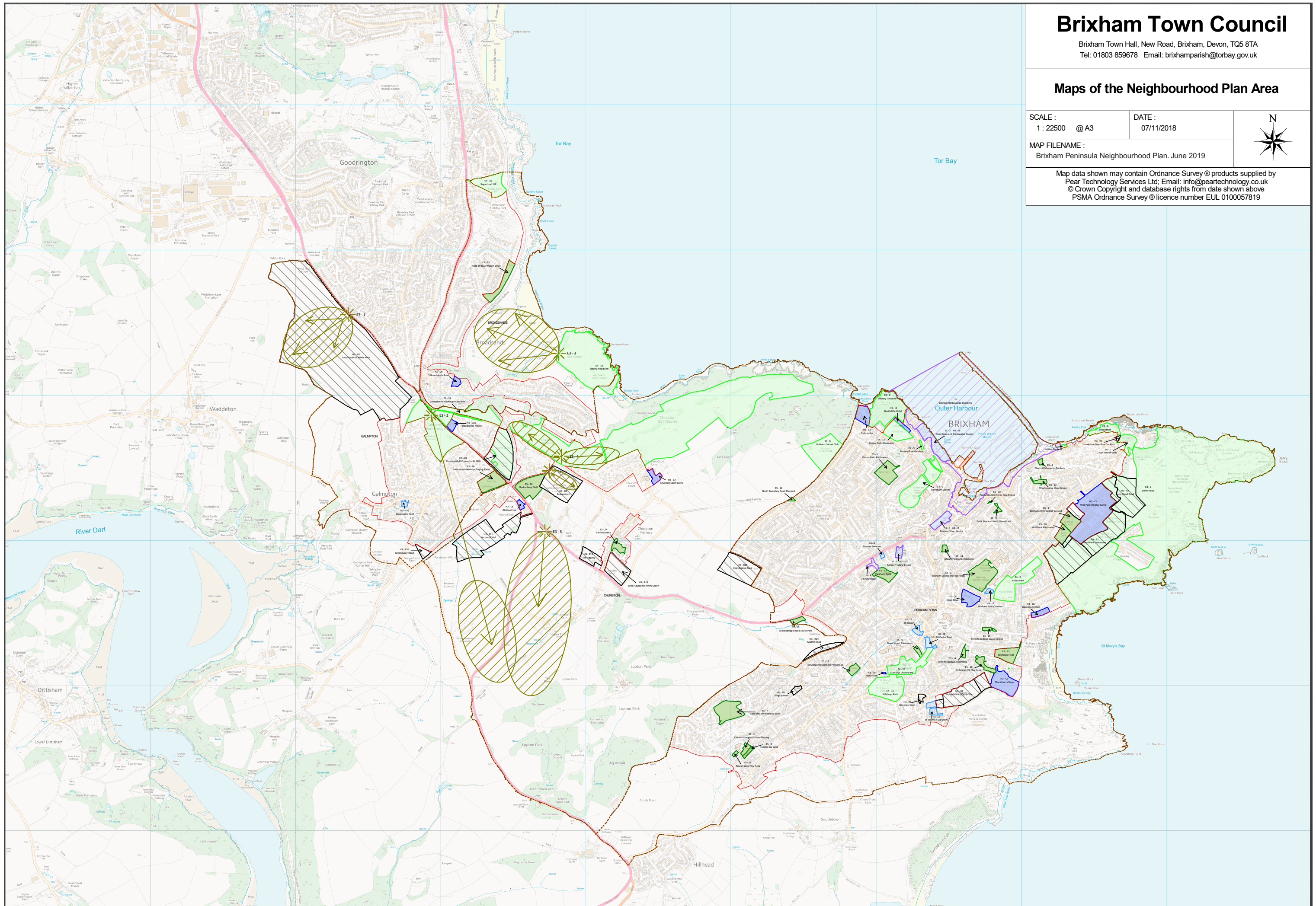
SCALE :
1 : 22500 @ A3

DATE :
07/11/2018



MAP FILENAME :
Brixham Peninsula Neighbourhood Plan, June 2019

Map data shown may contain Ordnance Survey © products supplied by
Pear Technology Services Ltd. Email: info@peartechology.co.uk
© Crown Copyright and database rights from date shown above
PSMA Ordnance Survey © licence number EUL 0100057819



Typeset by Sunrise Setting Ltd, Brixham

Brixham Peninsula Neighbourhood Plan 2012–2030. Adopted June 2019